



LADYBUG SPINNING WHEEL IS LAUNCHED

All the low-down on our new, irresistibly cute wheel



The Ladybug Spinning Wheel is friendly to entry-level spinners, easy to treadle, easy to take with you, and...as cute as a bug! The Ladybug has the characteristic solid Schacht construction, and its unique design is both functional and charming. With designed-in carrying handles and a weight of only 12½ pounds, the Ladybug is easy to pick up and transport. An optional attached tensioned Lazy Kate integrates into the front leg and is a snap to take along, too!



THE EDITOR SPOUTS OFF

Dear Weavers and Spinners,
Summer's flown and fall is here to stay. My big accomplishment weaving-wise this past summer was making a wedding shawl for my daughter Nora's big day. I wove the samples on my Flip rigid heddle loom, but then because time was of the essence, I wove the final project on my Baby Wolf loom. Because the weft packs in denser on a floor loom vs. a rigid heddle loom, I put on a little extra warp and wove a short sample to test my beat. I washed this sample, found it to be satisfactory, and then proceeded with the weaving. Nora's Wedding Shawl is the featured project in this issue—both 4-shaft and rigid heddle instructions are provided. Other interpretations might include adding color, such as crossing a blue warp with an orange weft. Another variation would be to use different colors for the ribbon and Tencel wefts. For fall, think of rich, earthy tones. This fabric is easy to weave and has a wonderful drape. Use your harness or rigid heddle loom... and HAVE FUN!

Happy fall!

Jane

P.S. In this issue, look for the 4-shaft pattern for the rigid heddle pillow project featured in the May/June *Handwoven*. Several of you have requested the 4-shaft draft.
P.P.S. Visit my blog for other weaving notes and comments at schachtspindle.com/blog/violetrose.html

Acclaim for the Ladybug

"It is CUTE. Better yet, it spins beautifully and the price is right. Just \$525."
—Joan Sheridan, Heritage Spinning and Weaving

"It's (the Ladybug) so congenial. It's simplistic. You can just sit down and spin."
—Marsha Novak, Village Spinning and Weaving

Ladybug Specifications:

- 16" nylon drive wheel
- Apple plywood and solid maple construction
- True double treadle
- Weight: 12 ½ pounds
- Height: 29"
- Width: 17"
- Depth: 18 ½"
- Orifice: ¾" diameter
- Orifice Height: 27"



(continued next page)

Ladybug with optional Lazy Kate

Newsletter in PDF Format

LADYBUG LAUNCH, CONTINUED

- Scotch Tension
- Long-wearing poly drive band
- Double drive option
- Stable and lightweight
- Comfortable and easy to treadle
- Comes with three bobbins, medium whorl, fast whorl, threading hook, and double drive band
- Spinning ratios: 5:1 to 16:1
- Optional: tensioned, integrated Lazy Kate (does not include bobbins)

Every wheel is unique—somewhere on your wheel is your very own Ladybug pal.

HOLIDAY GIFT-GIVING

If you're looking for a gift for a weaver or weaver-to-be, or for something simple and elegant to make for holiday gifts, take a look at



Jane Patrick's book *Time to Weave*. Jane's projects use primarily non-loom techniques—only a couple of projects need a small frame loom. Jane uses everyday materials like copper tape, plastic sheeting, shrink tubing, paper yarn, and granite tiles to create stunning contemporary objects for the home. Window hangings, coasters, mats, and pillows are just a few of the treasures you'll learn how to make. Visit [Interweave Press](#) for a closer look at *Time to Weave*.

DEAR TABBY

Dear Tabby,

I am sending this question for a friend who bought a second-hand Matchless wheel; it came with two high speed bobbins. We are wondering how you would use these if the wheel is set up for Scotch tension? We are of the understanding that the smaller end of the bobbin is put on the flyer closer to the spinner when spinning in Scotch tension.

—Judi

Dear Judi,

You are correct. Because you use the larger bobbin pulley for Scotch tension, you do not need high speed bobbins when spinning in Scotch tension mode. High speed bobbins are needed when using high speed and super high speed whorls in double drive mode only. (The smaller pulley on the high speed bobbins are needed with these smaller-diameter whorls). Since you already have the high speed bobbins, just go right ahead and use them as you would a regular bobbin.

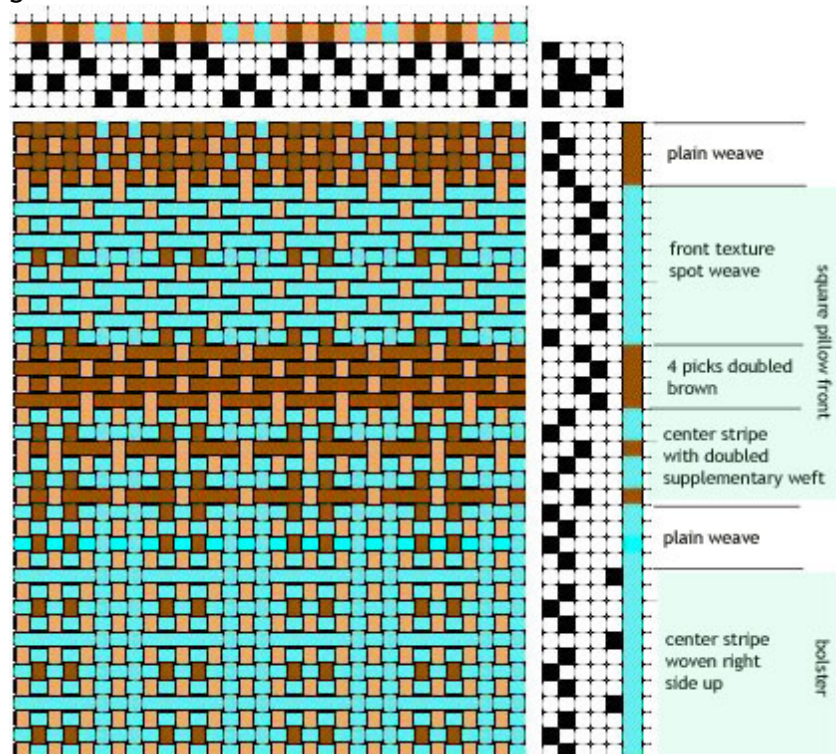
Dear Tabby,

I love your rigid heddle project in *Handwoven*, but I'd like to have the 4-shaft draft.

—Tina

Dear Tina,

Here is the 4-shaft draft for the bolster and pillow featured in the May/June 2007 *Handwoven*, page 67. Click on the draft to get the WIF file.



NORA'S WEDDING SHAWL

I wove this shawl in white for my daughter Nora's wedding, but this fabric design lends itself well to color variations. Both 4-shaft and rigid heddle variations are provided.

Project Notes:

Warp stripes alternate with skipped dents to create a fabric that looks more complicated than it is. The weft floats create vertical, textured stripes the length of the fabric. Each Tencel warp stripe is edged with 6 ends of wool/silk and help maintain the edge of the stripes, better defining the float stripes. In the weft, four picks of plain weave woven in Tencel alternate with 2 rows of Glace woven 3/1 float weave. A firm beat was used on the rigid heddle sample. Weave to square the plain weave areas when weaving on a floor loom.

Fabric Description: Spaced warps with plain weave and weft floats.

Finished dimensions after weaving: 20" x 81".



Equipment:
4-shaft Baby Wolf loom with a 10-dent reed or 25" wide Flip rigid heddle loom with two

10-dent rigid heddle reeds.

Warp: Jagerspun Zephyr silk-wool blend, off-white, and 8/2 Tencel, in white.

Weft: 8/2 Tencel, in white, and Berroco Glace rayon ribbon, in white.

Warp Length: 3 1/2 yards, allowing 1 yard for take-up, shrinkage, and sampling. The woven length is 90",



or 2 1/2 yards. You will need only about 24" loom waste if weaving this project on a rigid heddle loom.

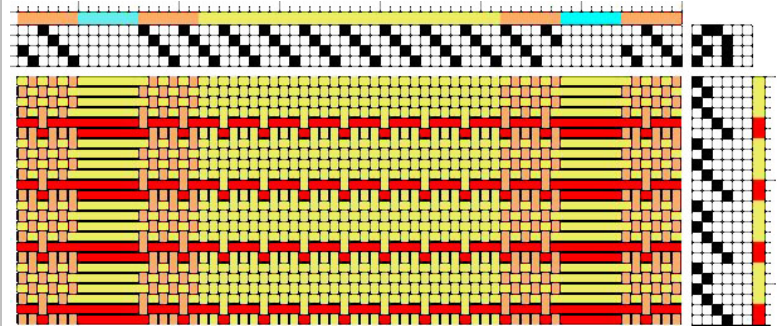
Width in Reed: 21 1/2".

WARPING GUIDE	REPEAT 8 TIMES						END		
Jagerspun 3 dents/6 threads	X		X		X		X		X
6 open dents		X			X			X	
Tencel 15 dents/30 threads				X			X		

For rigid heddle loom: See the [Winter 2007 issue](#) of this newsletter for how to thread two rigid heddles. On the warping guide, skip slots and holes (6 dents equals the equivalent slots and holes in both rigid heddles).

Weaving: Weave 1" of plain weave on either end of the shawl. Then weave 88", following either the 4-shaft draft or the rigid heddle weaving guide.

4-Shaft Draft: (Click on the draft to get the WIF file.)



Threading:

peach - Jagerspun
aqua - skipped dents
yellow - Tencel

Weaving:

yellow - Tencel
red - Glace

Rigid Heddle Weaving Guide:

1. both heddles up, Tencel
2. both heddles down, Tencel
3. both heddles up, Tencel
4. both heddles down, Tencel
5. heddle 1 up, Glace
6. heddle 1 down, Glace
7. Repeat

Note: To weave plain weave, weave up and down alternately with both heddles.

Finishing: Secure ends with a twisted fringe and hand wash in warm water with mild soap. Lay flat to dry. Steam press on high using a press cloth and a lot of pressure.